

# Southbank by Cala

Raval apartments 1 & 2 bedroom apartments

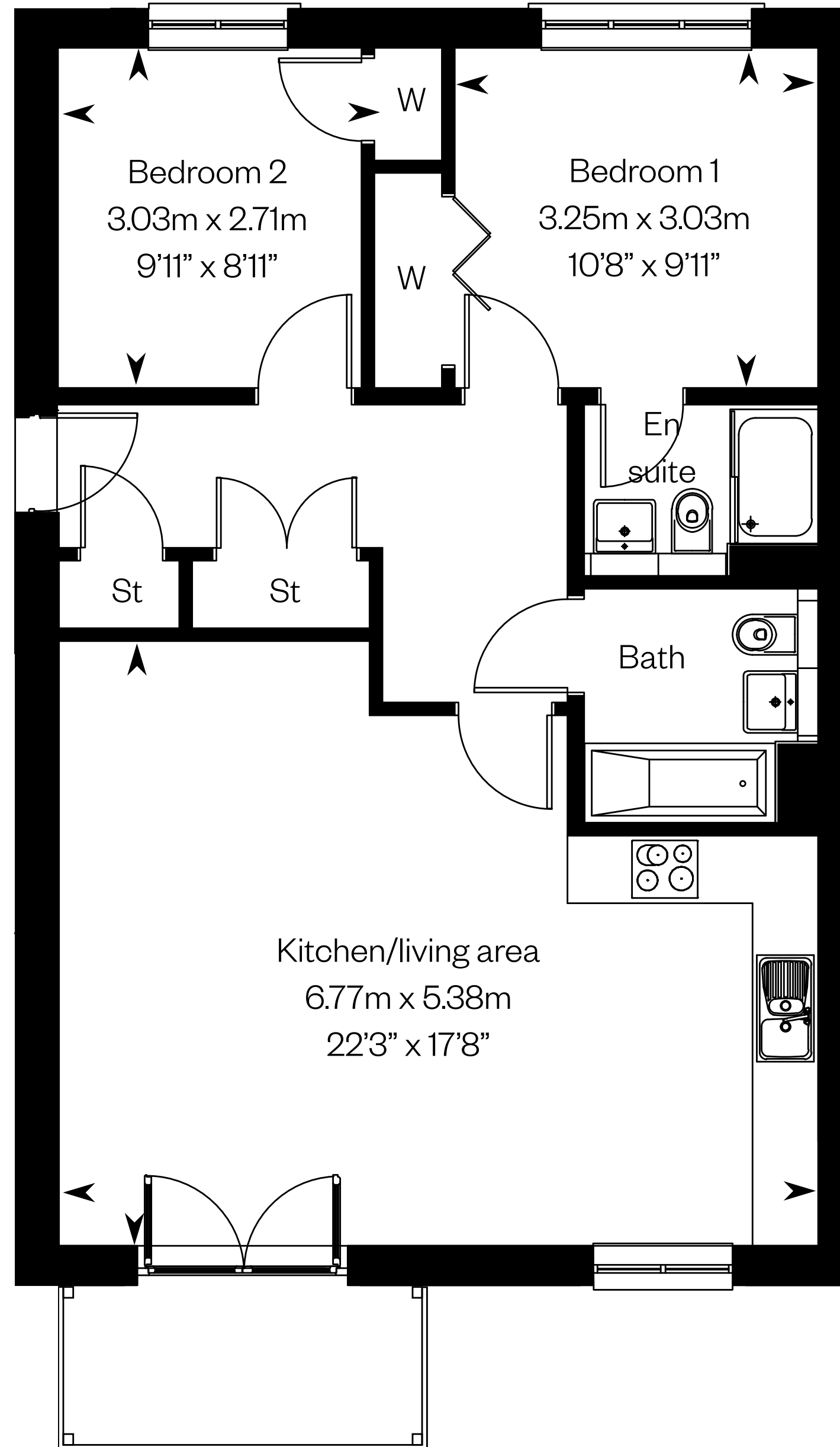


Computer generated image - A typical street scene at Southbank by Cala

# Raval apartments

Apartment type A1

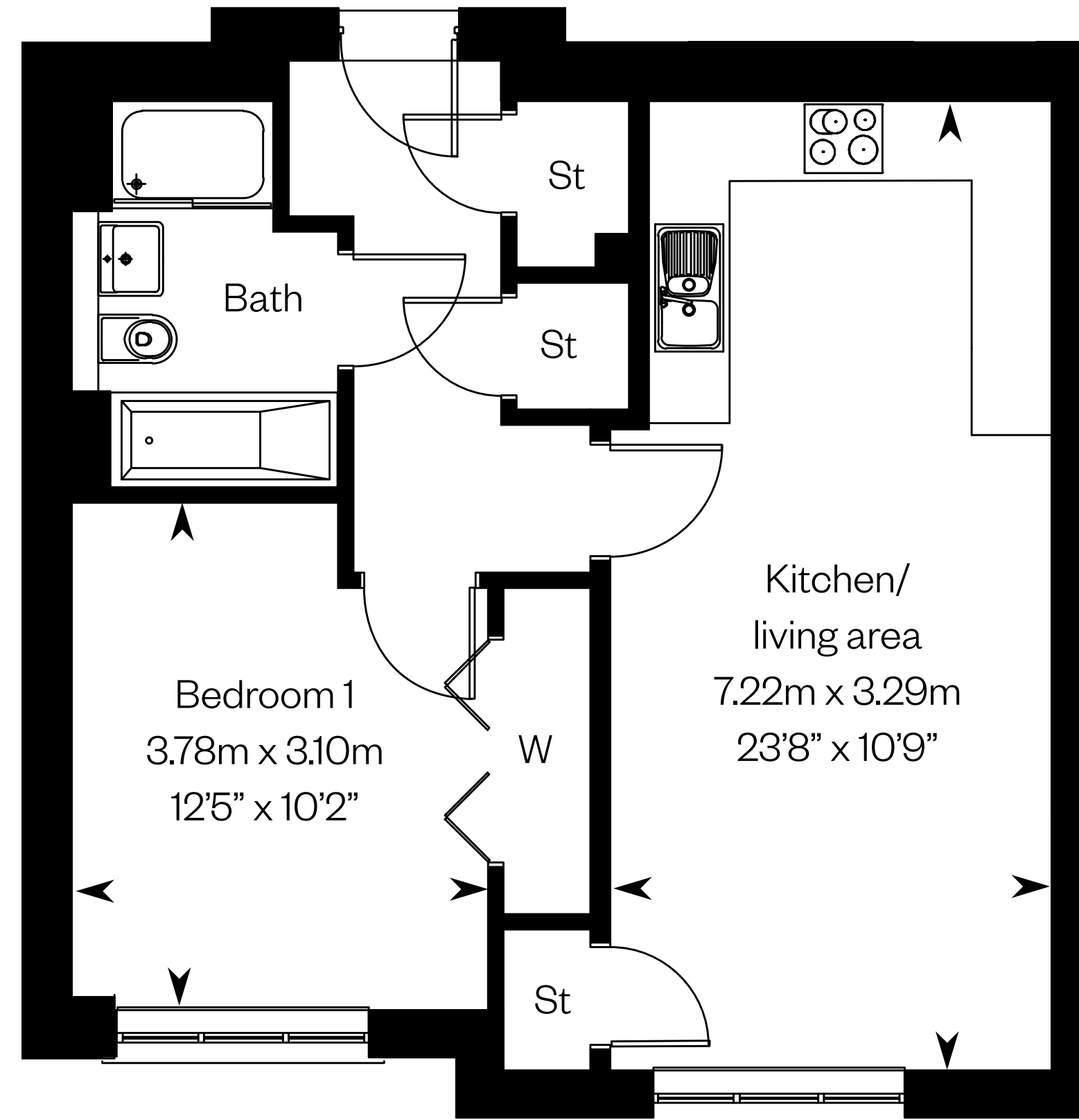
2 bedroom apartment



# Raval apartments

Apartment type B

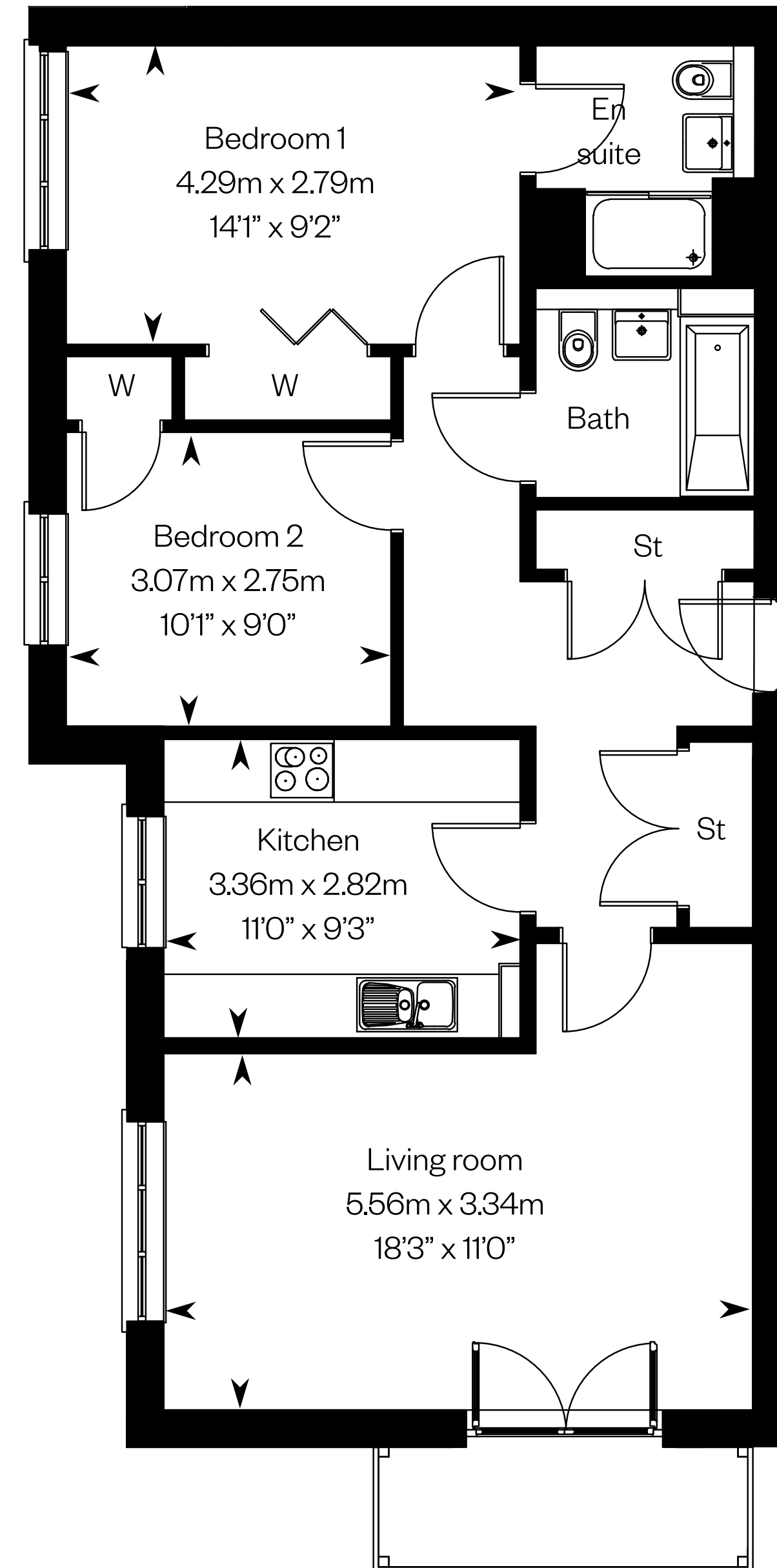
1 bedroom apartment



# Raval apartments

Apartment type C

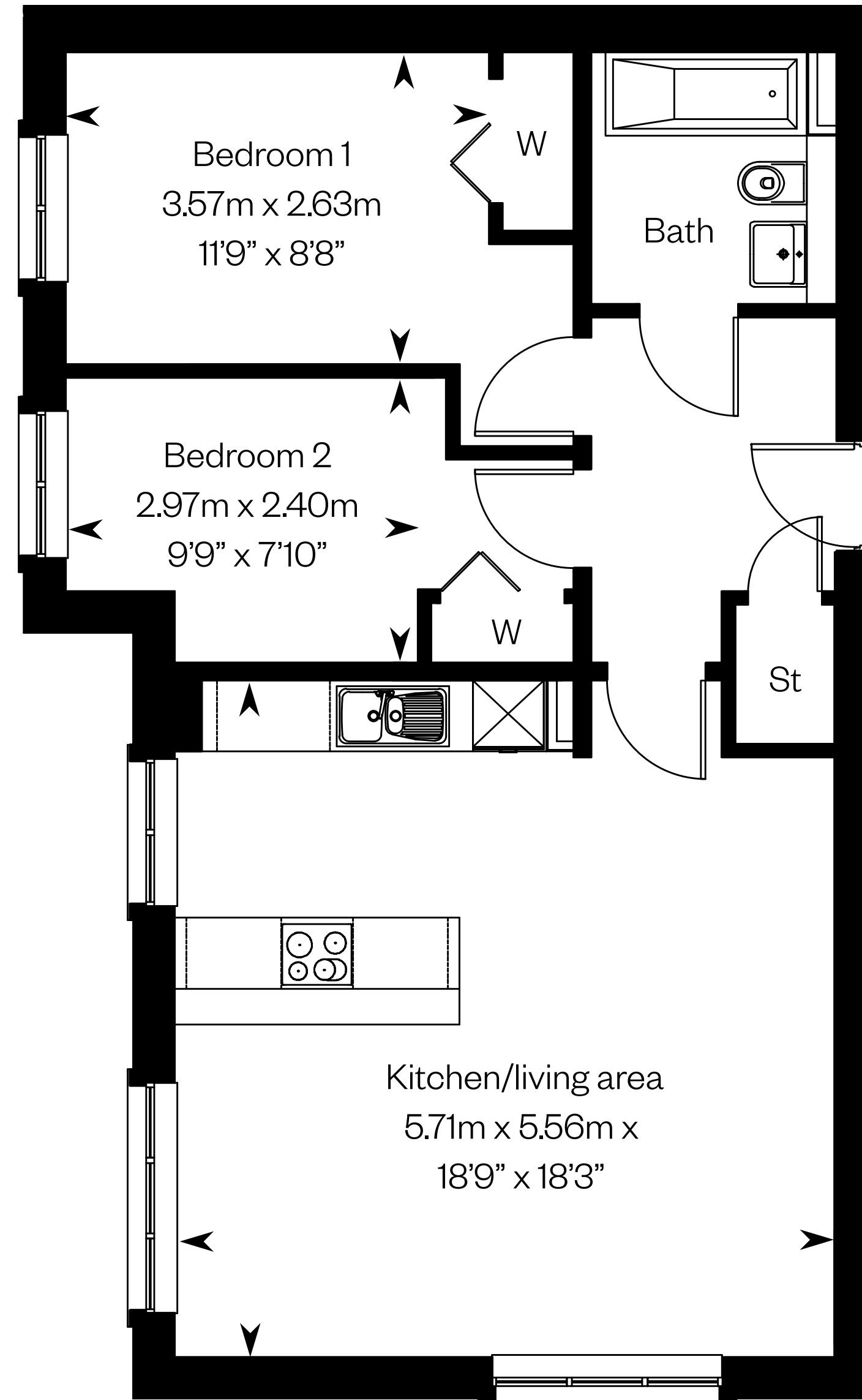
2 bedroom apartment



# Raval apartments

Apartment type 4

2 bedroom apartment



# Raval apartments

Ground floor

Apartment type A1

Plots 163, 164

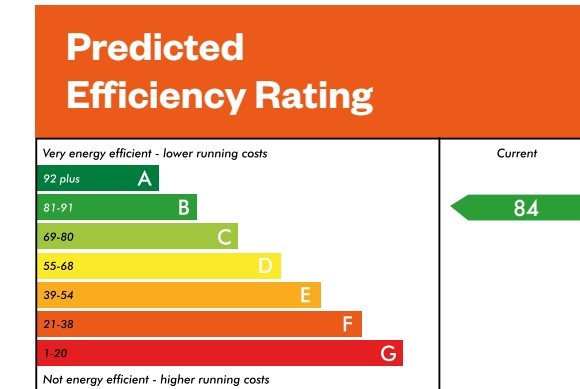
Apartment type B

Plot 162

Apartment type 4

Plot 161

Plots 161, 162, 163, 164



This is a Predicted Energy Assessment for properties that are incomplete. Once the property is completed, this rating will be updated and an official Energy Performance Certificate will be created for the property.



# Raval apartments

First floor

Apartment type A1

Plots 167, 168

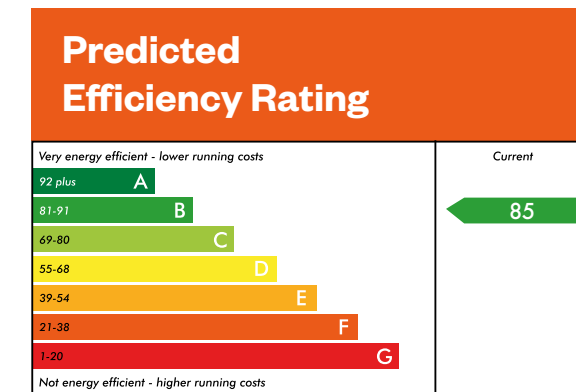
Apartment type B

Plot 166

Apartment type C

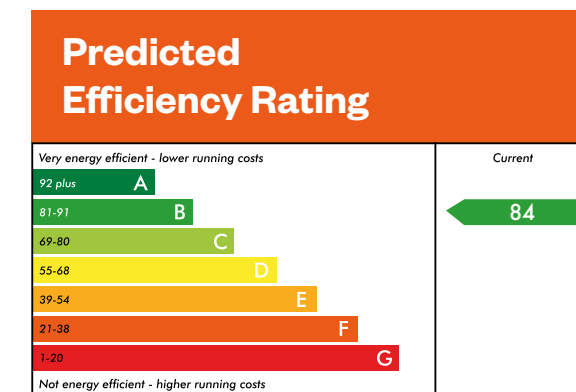
Plot 165

Plots 165, 167, 168



This is a Predicted Energy Assessment for properties that are incomplete. Once the property is completed, this rating will be updated and an official Energy Performance Certificate will be created for the property.

Plot 166



This is a Predicted Energy Assessment for properties that are incomplete. Once the property is completed, this rating will be updated and an official Energy Performance Certificate will be created for the property.



# Raval apartments

## Second floor

### Apartment type A1

Plots 171, 172

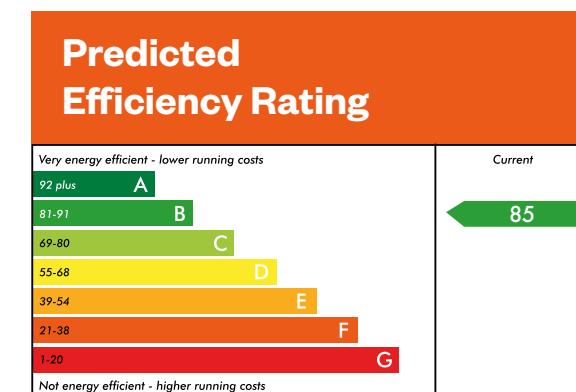
### Apartment type B

Plot 170

### Apartment type C

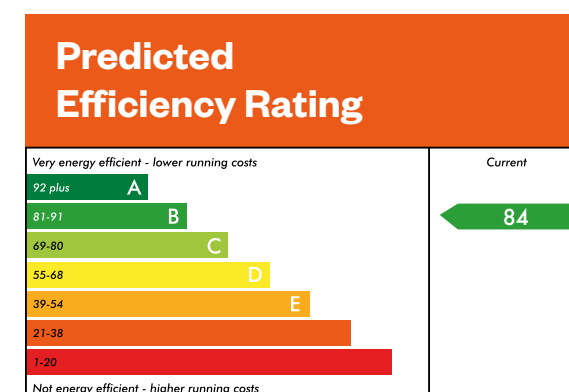
Plot 169

Plot 169



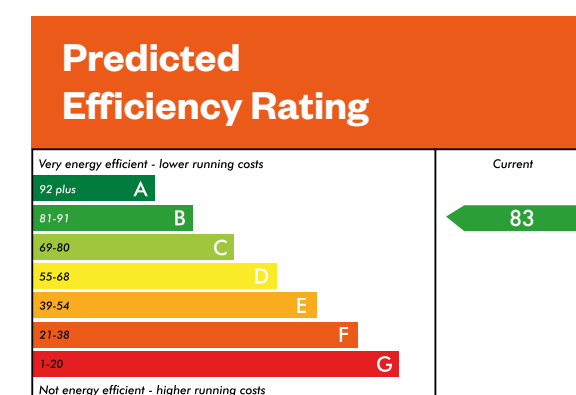
This is a Predicted Energy Assessment for properties that are incomplete. Once the property is completed, this rating will be updated and an official Energy Performance Certificate will be created for the property.

Plots 171, 172



This is a Predicted Energy Assessment for properties that are incomplete. Once the property is completed, this rating will be updated and an official Energy Performance Certificate will be created for the property.

Plot 170



This is a Predicted Energy Assessment for properties that are incomplete. Once the property is completed, this rating will be updated and an official Energy Performance Certificate will be created for the property.



Please ask your Sales Consultant for further details. St: Store cupboard. W: Wardrobe.

IMPORTANT NOTICE TO CUSTOMERS: The Consumer Protection from Unfair Trading Regulations 2008. Cala Homes (North Limited operates a policy of continual product development and the specifications outlined in this brochure are indicative only. The computer generated images and photographs do not necessarily represent the actual finishings/elevation or treatments, landscaping, furnishings and fittings at this development. Information contained is accurate at date of publication on 26.03.24. See the main brochure for the full Consumer Protection statement.